

To Let

Off Sales Unit

1279 London Road, Parkhead, Glasgow, G40

Rent: £10,000 per annum.



Size

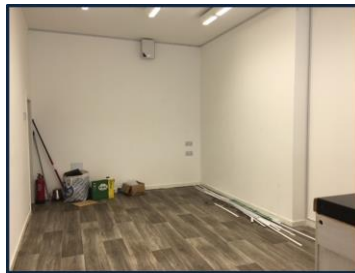
The property is approximately 400 sq ft

Lease

The subjects are offered on the basis of a new Full Repairing and Insuring lease on flexible lease terms. Lease will be inclusive of the use of the premise alcohol license which is chargeable at £2000, further charges may apply.

Rates

Rateable value is £2,000 per annum. Property may qualify for small business exemption



This newly refurbished former off sales unit is available for let and is inclusive of the premises alcohol license. The unit is located on London Road with a high footfall, particularly on match days when crowds of supporters flock to the nearby Celtic Football Club.

The property is located in the East End of Glasgow close to Celtic Park Football Stadium, the new Velodrome Stadium and The Forge shopping centre. The location is an area of high footfall, particularly during match days. The surrounding area will also benefit greatly from the completion and sale of the athletes village located just 200 metres away. This new residential development will greatly benefit the local area and will increase demand for local businesses for the long term.

To arrange a viewing please contact the office on 0141 550 2255 or alternatively email info@lookingtorent.co.uk

Deposit: **£2,500.00**
Available From: **Immediately**

